

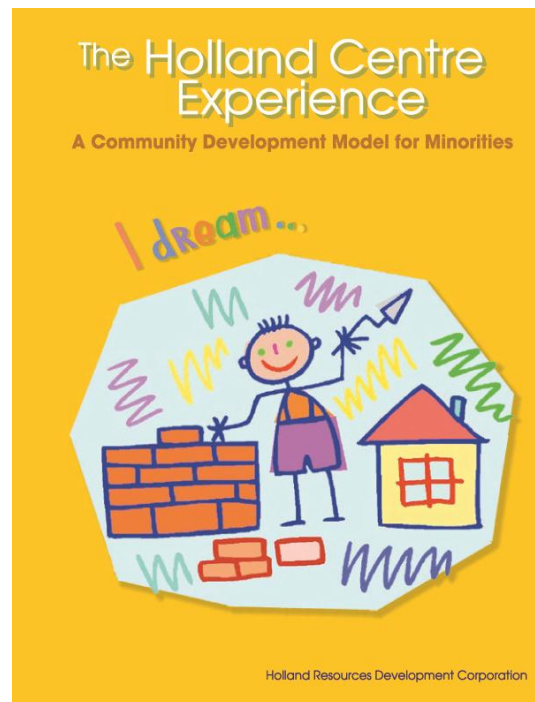
# CHSSN

*Community Health  
And Social Services Network*  
Réseau communautaire de santé  
et de services sociaux

## Networking and Partnership Initiative (NPI)

Jennifer Johnson, Executive Director, CHSSN  
Exchange Session  
March 16, 2011

- 20 year story of grass roots community development that has led up to where we are today. Started in Quebec City.
  - The Holland Centre Experience: A community development model for minorities



## *Guiding Principals*

- Develop/share a knowledge base of the ESC
- Establish links between the ESC and the public sector
- Revitalize communities' capacity to participate
- Improve access to existing services in English
- Not to create a parallel system
- Develop access to services based on need and priorities

## *Networking and Partnership Model*

### **Networking and Partnership Initiative (NPI)**

- Funded by Health Canada
  - Official Language Minority Communities
- One of four measures employed by CHSSN for the English-speaking community of Quebec
- 2008-2013 time frame
- Preparing 2013-2018 recommendations

## Networking and Partnership Initiative



## 4-year Health Canada Commitment

- CHSSN
  - Networking and Partnership Initiative
  - Community Health Promotion Initiative
  - Adapting Health and Social Services Initiative
  - Enhancing Knowledge Initiative
- McGill Training and Retention of Health Professionals

