



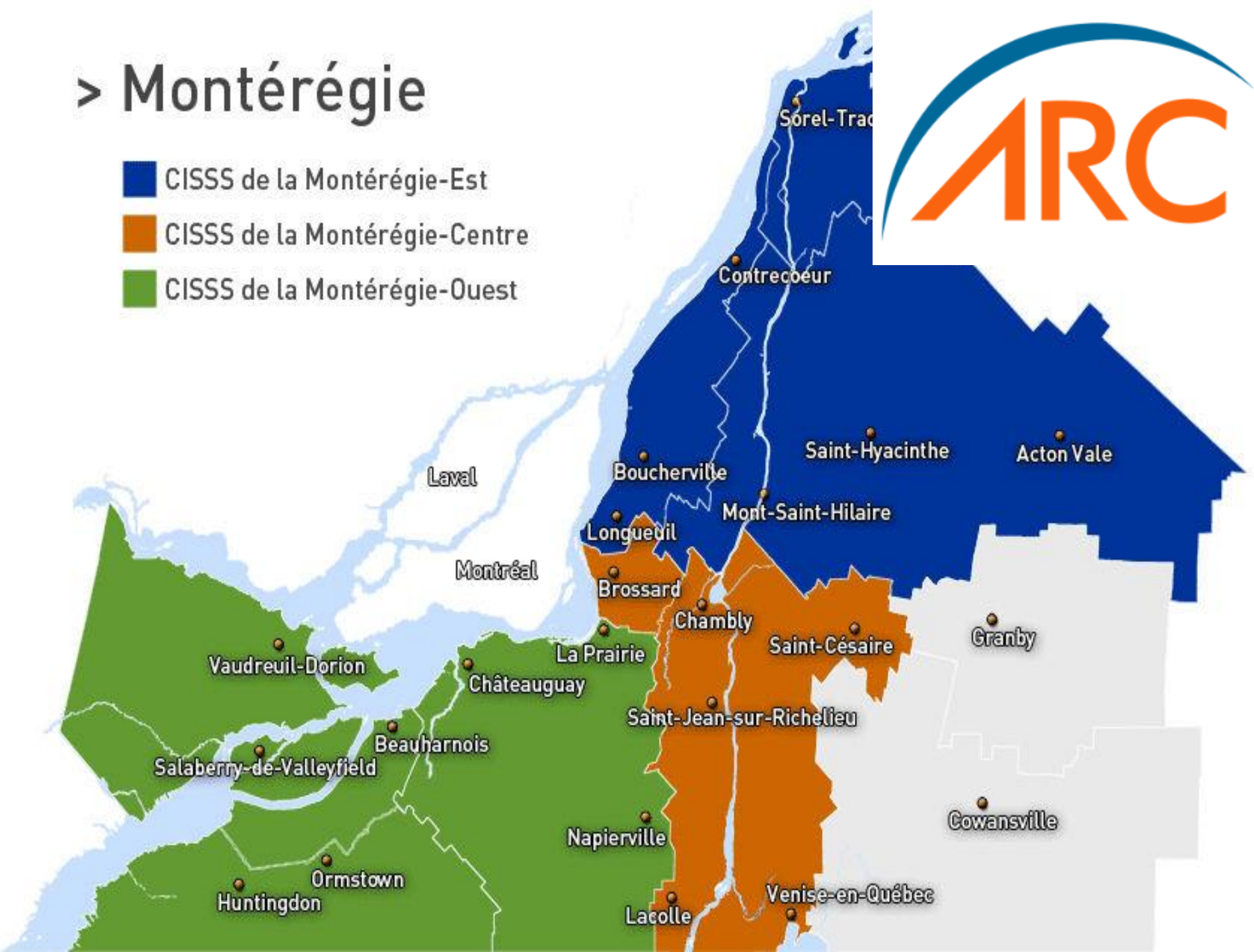
A Silver Lining of the Pandemic: Forging New Partnerships

Or

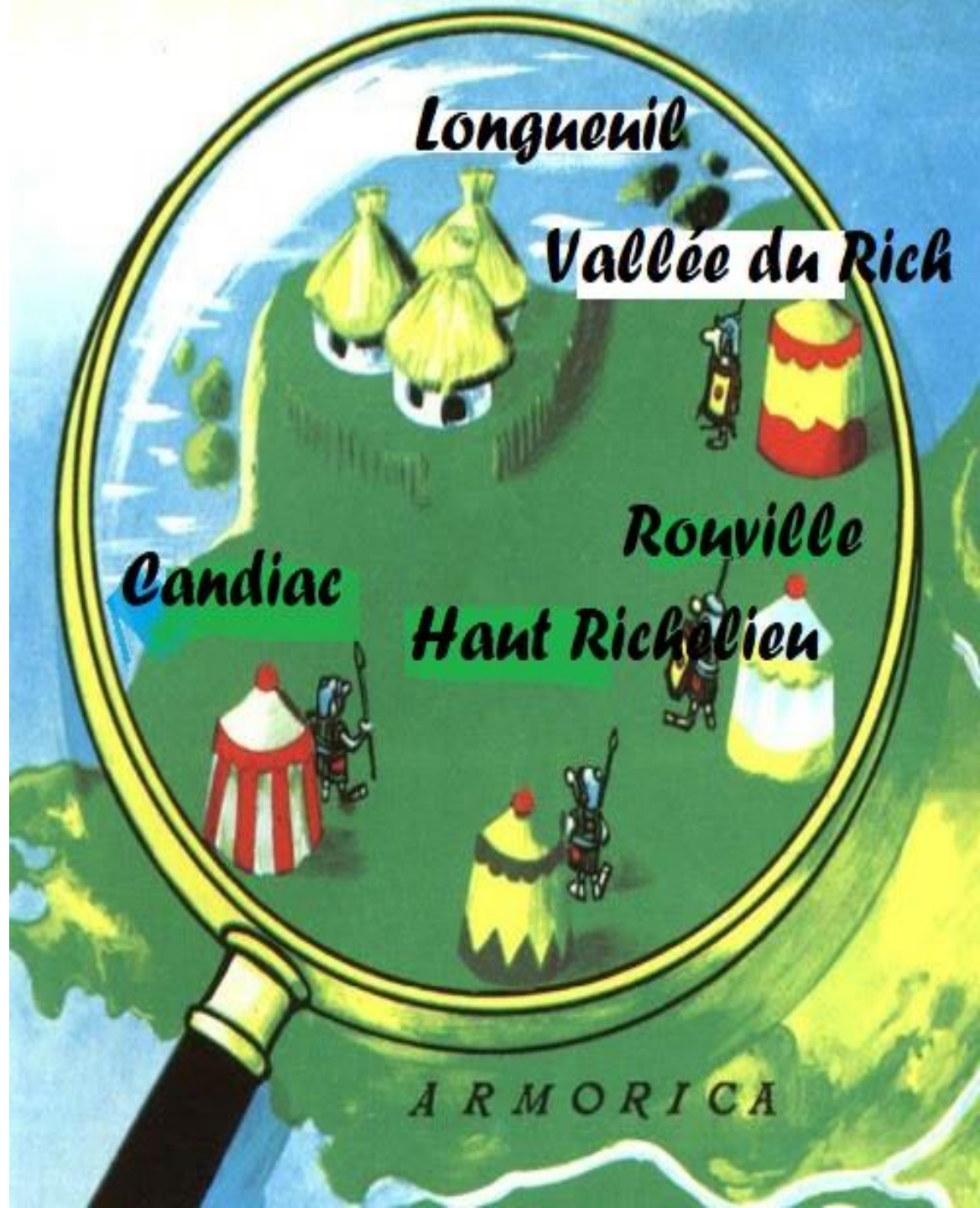
Partnerships we may not have
made without the COVID situation

> Montérégie

- CISSS de la Montérégie-Est
- CISSS de la Montérégie-Centre
- CISSS de la Montérégie-Ouest



- ▶ **5 MRC's:**
- ▶ Al Longueuil NPI
 - ▶ 59 285 ESC
 - ▶ 10% increase since 2016
- ▶ Vallée du Richelieu/Chambly NPI
 - ▶ 5240 ESC
- ▶ Rouville NPI
 - ▶ 730 ESC
- ▶ Haut Richelieu/St Jean NPI
 - ▶ 4205 ESC
- ▶ Rousillon/Candiac ERCC
- ▶ ARC / MWCN
 - ▶ 27 040
- ▶ **Total 96 540**



MARCH 2020





 MEPEC Karoll-Ann	 ARC (Assistance ...	 amiQuébec	 Karissa Clayberg...	 Mwcn2016@gmail ...
 Chris Lapointe	 Jessica Bickford	 Nicole Julien	 manye	 Debra Dorey
 Michael Sitruk	 Lynn Osborne	 Bergeron	 Lorraine	 PREM PEARSON-AR...
 Cathy - Premiers...	 Dolly Shinhat	 Veronica Thomas	 Brian □	 Annie Beauregard

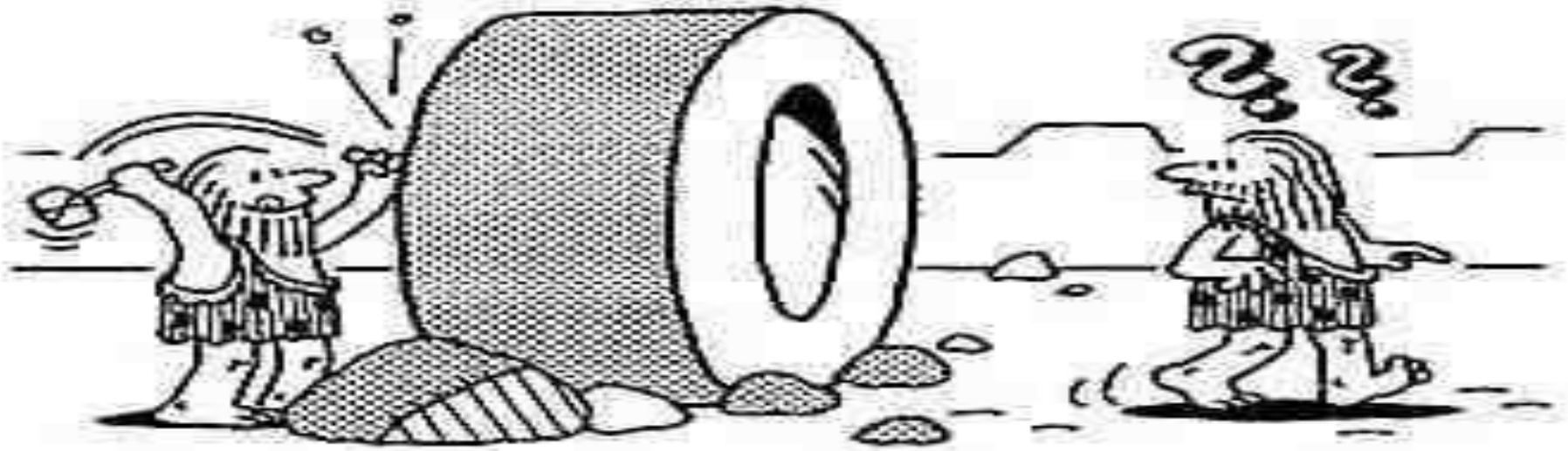
From Brian □ to Everyone

□





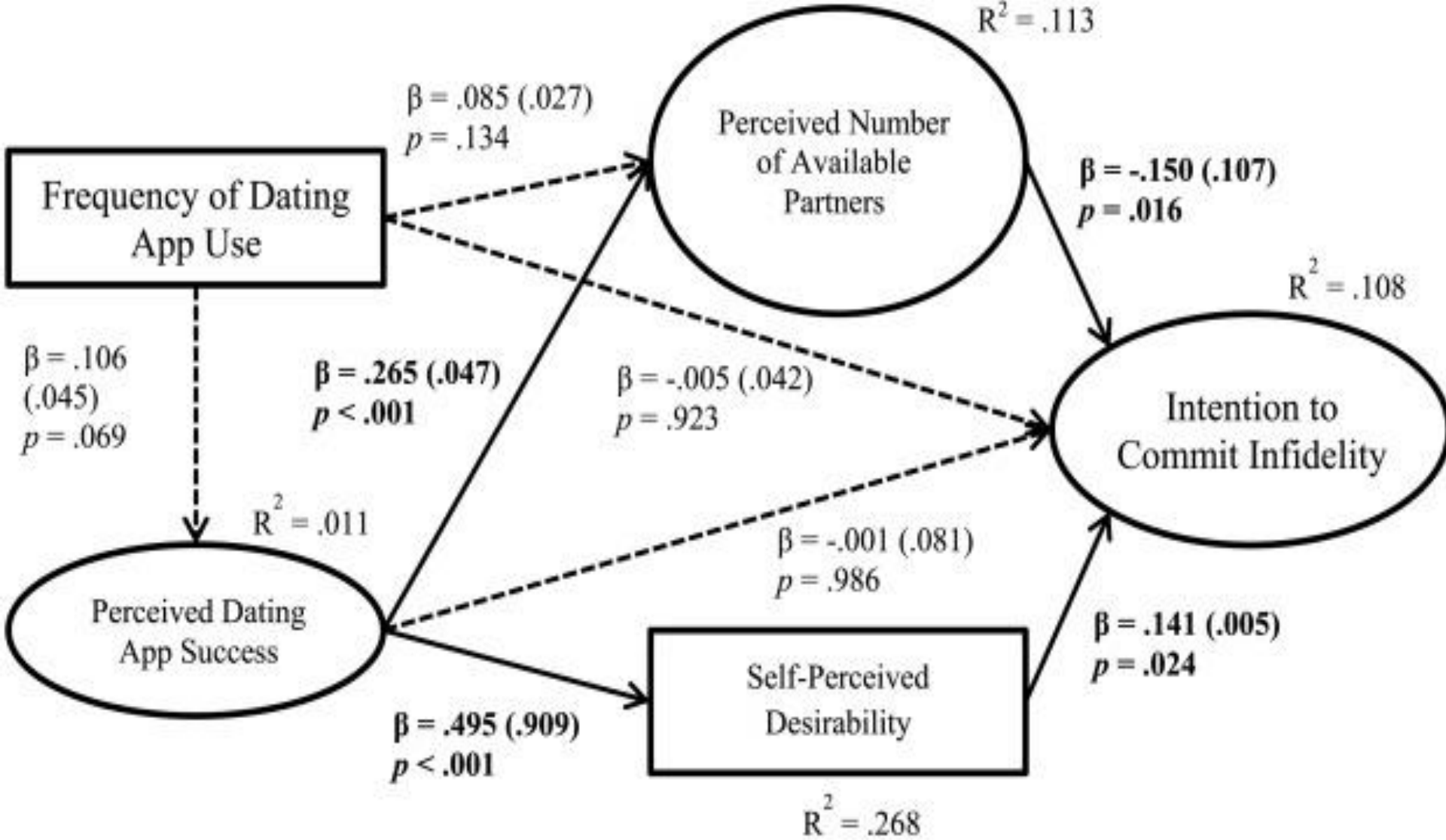
Time to reinvent ourselves



TARNOWSKI

Partnerships = Relationships = Dating





Note: Coefficients are reported as standardized coefficients and numbers in parentheses are standard errors. Sex, age, sexual orientation, and relationship status were included as covariates. Solid lines represent significant paths, and the dotted lines represent hypothesized but insignificant paths.

Partnerships are sometimes like
Facebook friends



Used a mutual gain partnership approach:

- ▶ Centre d'Action Bénévoles (CAB)
 - ▶ St-Jean, Iberville, Marieville, St-Hubert, CAB Rive-sud (3)...
- ▶ Let's be friends because:
 - ▶ We don't get PSOC funding
 - ▶ You can't get our funding
 - ▶ Our people will use your services, therefore increasing your numbers¹³

Mutual gain partnership approach:

▶ Meals on Wheels

▶ Frozen meal GPK, Meals on Wheels GPK, Meals on Wheels St-Lambert, Legion.

▶ Let's be friends because:

▶ We don't do "food"

▶ You can't hold your fundraising activities.

▶ Our people will use your services, therefore increasing your numbers



Bringing food to a foodbank:

- ▶ Outreach visits:
 - ▶ Outreach coordinator does sporadic food distribution with volunteers allowing to visit people, making a visit and addresses their situations and report back to social work at the CLSC.
 - ▶ We continued with the distribution of over 2000 meals tks to CHSSN funding

ERCC / Significant shortage of community space

- ▶ Under the ERCC funding, we are a group of 14 partners working with the MRC, municipality and Corporation de développement communautaire (CDC) to develop a community centre for the whole community.



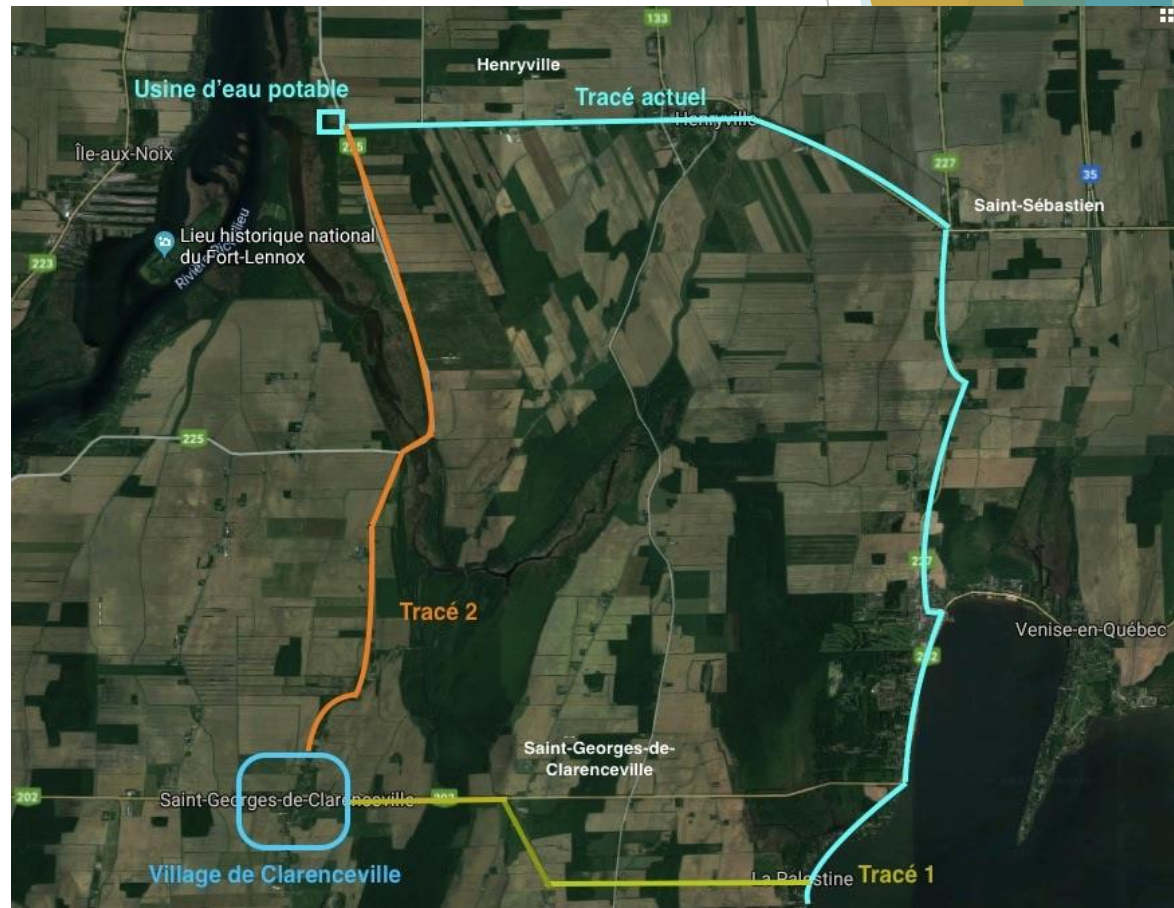
ERCC / Community space

- ▶ Working with a group of 5 partners from a local senior partnership table, together we are working on a community fridge initiative in Haut Richelieu Rouville



ERCC / Community space

- ▶ Also in Haut Richelieu, we are starting a project working in partnership with the MRC, Municipality, Corporation de développement communautaire (CDC) to bring potable water to a small community near the U.S. border



Senior Action Québec

- ▶ We received Ipads that were distributes to seniors



CISSS Montérégie Centre

- ▶ ARC's In Person activities resumed at CHSLD Samuel de Champlain for 2 months during COVID.
- ▶ Social workers from the CLSC and the department of psychiatry from Hospital Charles Lemoyne are sending their English-speaking clientele to us for them to get support and access to activities.
- ▶ We never were able to reach that deep in the CISSS before

31 partners



We currently work with 15



Nurturing the partnership



ADDRESSING THE DELIVERY AND ORGANIZATION OF
ENGLISH LANGUAGE SERVICES IN THE MONTERÉGIE

- ▶ Find an opportunity to regularly bring your partners together.
- ▶ Either monthly or yearly.
- ▶ New guest speaker at mtg.

The poster has a blue background with a white and yellow graphic at the top right. The main title 'BUILDING COMMUNITY TOGETHER' is in large, bold, multi-colored letters (orange, green, and dark blue). Below it, 'Special Virtual Edition' is in white. The event date and time are listed in orange. A 'Click here to register' button with a hand cursor is prominent. Text on the right describes the event's purpose and provides a website link. Contact information is at the bottom.

**BUILDING
COMMUNITY
TOGETHER**
Special Virtual Edition

Join us online Saturday, October 16 at 10:00 a.m.

Open to all

15 prizes with a \$50 value each to be won (details on the day of the event)

Learn more about the services and activities offered and maybe win a door prize in the process!

Register in advance for this meeting:

[Click here to register](#)

After registering, you will receive a confirmation email containing information about joining the meeting.

Due to the current social climate, the Regional Health and Social Services Partnership Table will be holding its annual "Community Fair" virtually this year.

We will begin with a short welcome presentation, then discover at your pace organizations operating in the Monteregee who offer health and social services to the English-speaking community. Videos available on the day of the event at www.arc-hss.ca/virtuallfair.

This activity was made possible thanks to funding from Health Canada through CHSN

For more information:
✉ info@arc-hss.ca
☎ 514-605-9500
🌐 www.arc-hss.ca/virtuallfair

🇨🇦 Health Canada Santé Canada

CHSN

Discover Montérégie organisations that take care of the English speaking population

General support **Elderly** **Youth** **Mental health** **Impairments** **Physical health** **Chronic**
Diseases **Respite** **Housing** **Caregiver support** **Social integration** **Health prevention**







Participations to activities:
We're actually doing more
since the pandemic

- ▶ 2019-2020 3500 participations
- ▶ 2020-2021 7138 participations
- ▶ 2021-2022 7547 participation
- ▶ (April to December)

During the fiscal year 2020-2021 ARC hosted:

- ▶ 32 Virtual Cafés for a total of 137 participants
- ▶ 14 Colour Cafes for a total of 115 participants
- ▶ 34 Drawing classes or workshops for a total of 387 participants
- ▶ 22 Mental Health Cafés for a total of 241 participants
- ▶ 10 Yoga Classes for a total of 350 participants
- ▶ 10 Qi Gong classes for a total of 180 participations
- ▶ 21 Line Dancing classes for a total of 571 participants
- ▶ 208 families were reached through ARC's early youth development programming with our partners SSRC and Home-Start Champlain
- ▶ 63 hospital workers were reached for a total of 510 participants with our McGill dialogue English conversation activity offered 3 times per year at the CISSS Montérégie-Centre
- ▶ 171 participants to ARC's ReCharge program & 440 calls for assistance
- ▶ 60 seniors were reached during National Senior Day
- ▶ 69 participants at ARC's group support for caregivers
- ▶ And more...

ARC assisted in the development of the capacity of other organizations to enable them to better assist the ESC

- ▶ **Our Harbour:** Access to funding, administrative development + partnership
- ▶ **Senior Respite Montérégie:** Financial and administrative support+ access to funding + partnership
- ▶ **Premiers Pas Champlain:** Financial and administrative support + partnership
- ▶ **Meals on Wheels GPK:** Financial support and support in services + partnership
- ▶ **Meals on Wheels St Lambert:** Financial support
- ▶ **Frozen Meal GPK:** Financial support + administrative support
- ▶ **Legion GPK:** Access to funding + financial and administrative support + partnership
- ▶ **Preville Fine Art Center:** Access to funding + financial support + administrative support + partnership
- ▶ **Phoenix Kid's Club:** Financial support + partnership
- ▶ **Arthrite Rive Sud:** administrative support
- ▶ **Entraide Chambly:** Partnership & financial support
- ▶ **Friends of St Johns:** Partnership and support
- ▶ And more...

Assistance and Referral Centre



LOONEY TUNES



That's all