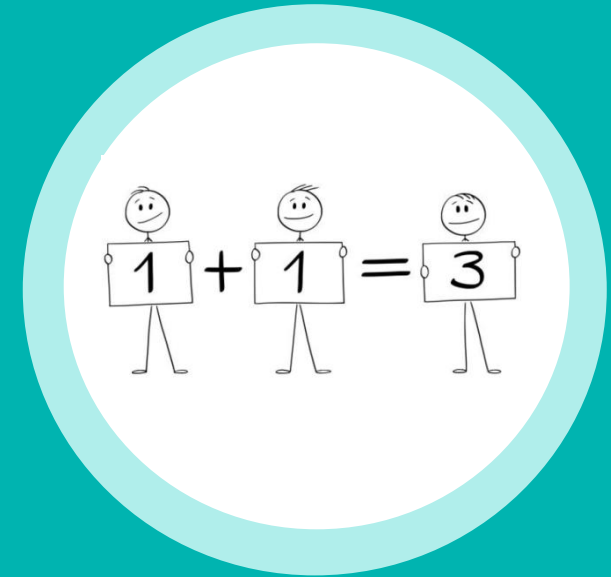


A partnership initiative in Montréal

CISSS de la Montréal-Centre
CISSS de la Montréal-Ouest
CISSS de la Montréal-Est
Assistance and Referral Center
Montréal West Community Network
Montréal East Partnership for the English-speaking Community



The Montérégie

- Large territory: 10,000 km² (2h driving time between Sorel and Huntingdon)
- Approximately 1,507,070 inhabitants of which 156,200 are English-speaking (10%)
- English-speaking population is not homogeneous (e.g. rural v. urban, multicultural for some territories)

To cover the territory, 3 CISSS and 3 NPI

CISSS de la Montérégie-Ouest

NPI MWCN

CISSS de la Montérégie-Centre

NPI ARC

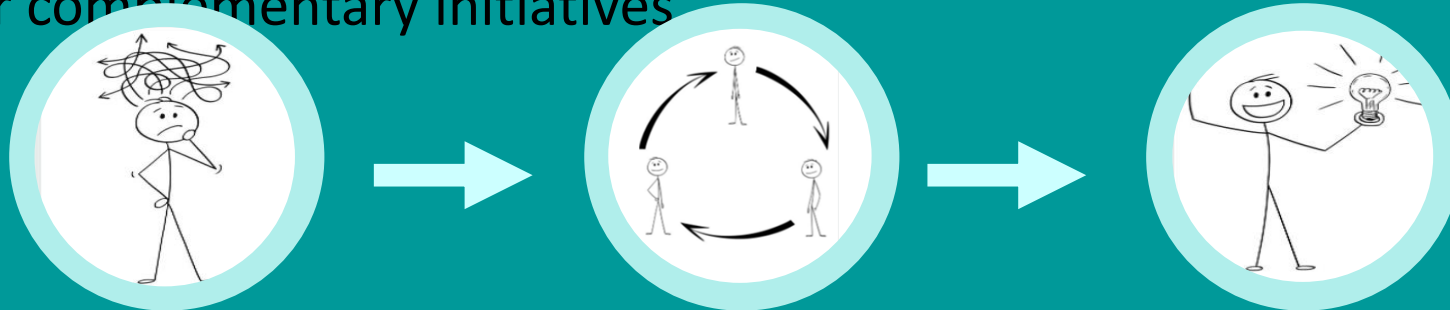
CISSS de la Montérégie-Est

NPI MEPEC

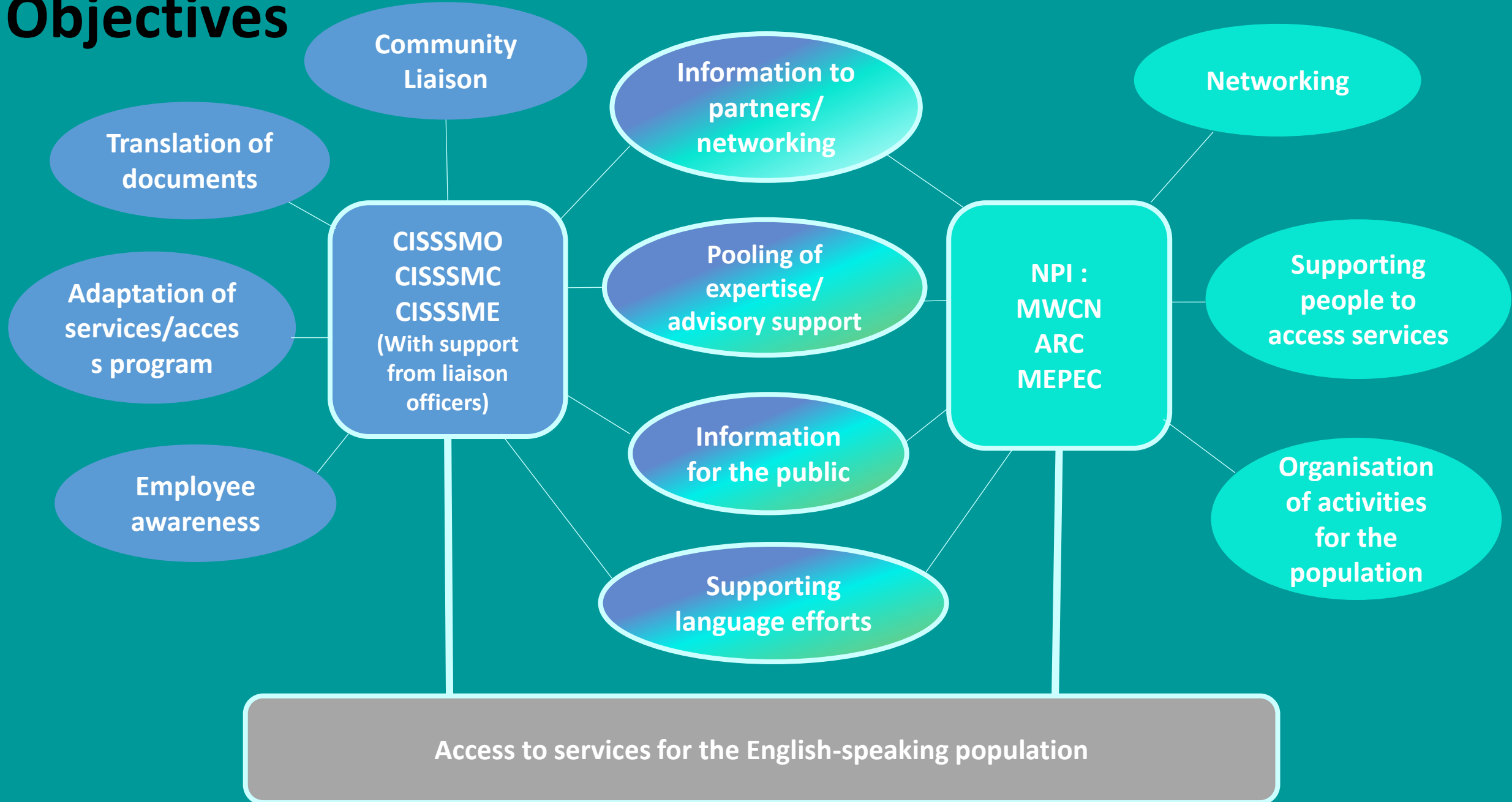


Regional collaboration between the public and community networks

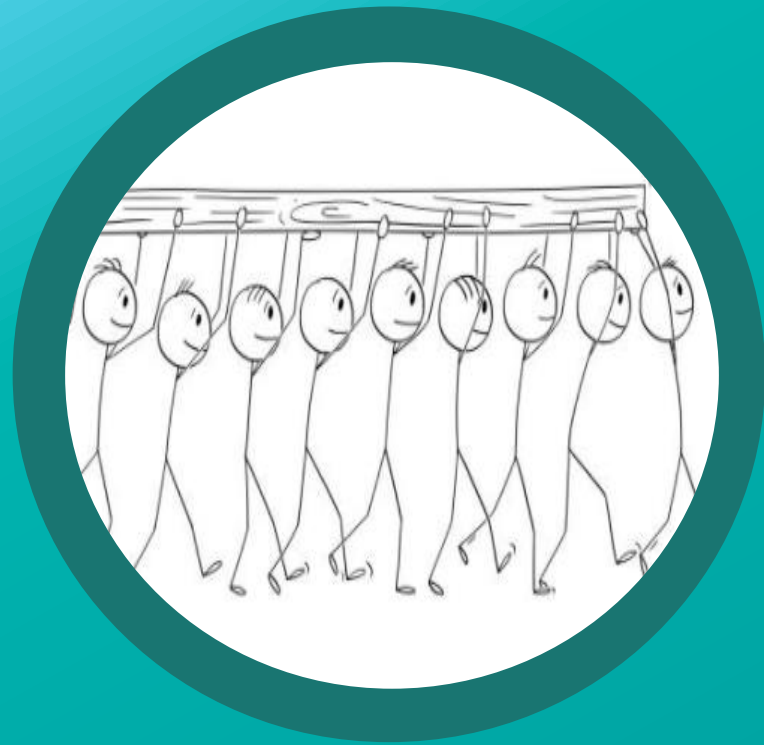
- The CISSS and NPIs, along with other partners, are working together to improve access to services for the English-speaking population
- This collaboration is facilitated by:
 - Common objective guiding actions in the same direction: Facilitating access
 - Openness to the realities of others
 - Respect for the expertise/organisational realities that determine the involvement of each person
 - Dedicated and available financial and human resources to support collaboration
 - Joint and other complementary initiatives



Objectives



Projects that illustrate areas of collaboration



Round Tables and Partnership Tables for English-language services

- Round tables for the whole population - Elderly, Youth, Mental Health, Municipalities, Caregivers etc...
- Partnership tables for English-language services (NPI):
 - Regional health and social services partnership table (about 31 partners, 8 meetings per year)
 - Chateauguay, Huntingdon and Pinpoint partnership Tables
 - East senior's discussion Table

➤ Objectives:



- ✓ To this end, organisation of joint activities (e.g. fairs, conferences, mental health table)

Activities arising from the English-language Partnership Tables

- **Events**

- Annual fairs (e.g. RHSSPT, Pincourt, Community evenings)



Information
for the public

Information to
partners/
networking

- **Star program**

- Two cycles per year/approximately 35 appointments per cycle
- Employee and volunteer recognition (certificates, gift cards)



Supporting
language
efforts

Activities arising from the English-language Partnership Tables (continued)

- **Committee for the Mental Health of the English-speaking Population**

- Exchange of information on available services
- Pooling of expertise
- Creation of a resource directory and calendar monthly activity report
- Service Mapping



Information to
partners/
networking

Pooling of
expertise/
advisory support

- **English Mental Health support group**

- Support group offered by the CISSS
- On the premises of an NPI, close to the English-speaking population

Information for
the public

Other activities arising from the English-language Partnership Tables

- Training (e.g. elder abuse, mental health first aid)
- Respite for families of people with ASD
- Initiative for adults with developmental delay
- Activities for children during the Easter holidays
- National Day for the Elderly
- Activities for young children
- Collective kitchen activities
- Community evenings



Information to
partners/
networking

Pooling of
expertise/
advisory support

Information for
the public